



St. Gerard Majella Roman Catholic Church

300 Terryville Road
Port Jefferson Station, NY 11776
Phone: 631-473-2900 Fax: 631-473-0015
www.stgmajella.org

Pastoral Staff

Pastor

Rev. Gregory Rannazzisi frgreg@stgmajella.org

Parochial Vicars

Rev. Frank Grieco
Rev. Francis Lasrado frfrancis@infantjesus.org
Rev. Sijomon Varghese frsijomon@infantjesus.org

In Residence

Rev. Matthew Udobi
Rev. Vitus Ezeiruaku

Deacons

Deacon Pat Gerace deaconpat@infantjesus.org
Deacon Frank DellAglio deaconfrank@stgmajella.org
Deacon John Grebe deaconjohn@stgmajella.org
Deacon Carlito Roman deaconcarlito@stgmajella.org

Parish Trustees

Art Reyling & Ralph Carusillo

Pastoral Staff

Dcn. Carlito Roman, Pastoral Associate for Administration
Chuck Pramnieks, Music Director chuck@stgmajella.org
Bob Paplin, Facilities Manager rpaplin@stgmajella.org
Jennifer Donnellon, Office Manager jennifer@stgmajella.org
Patty Longo, Director of Religious Ed. patty@stgmajella.org
Denise Nienburg, Thrift Shop Manager thrift@stgmajella.org
Jackie Maggioro, Receptionist secretary@stgmajella.org

Parish Office Hours

Monday — Thursday: 9:00am-4:30pm
Sunday: 8:00am-1:00pm Closed Friday and Saturday

Mass & Devotions

Saturday: 5:00pm Sunday: 8:00am, 10:00am, 12:00pm
Weekdays: 9:00am
Rosary: Monday – Friday: 8:30am
Chaplet of Divine Mercy: Monday - Friday: 9:30 am
First Saturday: 11:00am Mass with the Anointing of the Sick

Penance

The sacrament of Reconciliation (Confession) is celebrated on Saturdays from 3:45pm-4:45pm. You may call the Parish Office to make an appointment with one of the priests.

Baptism

Baptisms are typically held twice a month at 1:30pm. Please call the Parish Office to schedule an appointment to set a date. Selection of godparents should be made after speaking with one of the priests or deacons.

Marriage

Please call the Parish Office to make arrangements for your wedding at least six months in advance. No date can be set until the couple meets with a member of the clergy.

Parish Outreach Hours

Food Pantry

Tuesday: 11:30am-3:00pm
Wednesday: 12:30pm-3:00pm
Thursday: 11:30am-1:30pm & 4:30pm-5:30pm

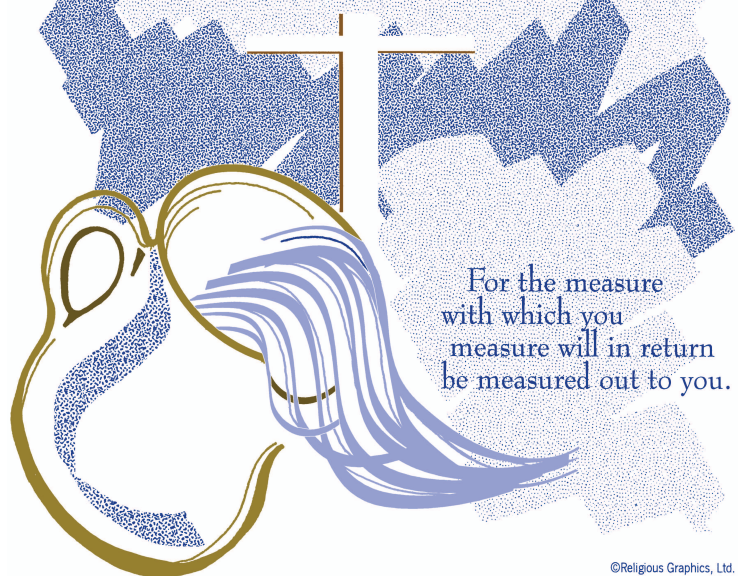
Thrift Shop/Barn

Monday — Thursday: 10:00am-4:00pm
Friday: 10:00am-2:00pm
Donations accepted Monday-Thursday: 10:00am-3:00pm and Friday: 10:00am-1:00pm. Please refer to our website for a list of items that can be donated.

Stewardship Supper

The Thursday evening dinner is served between 4:30pm and 5:30pm. All are welcome.

BE MERCIFUL
just as your FATHER in
heaven is merciful



©Religious Graphics, Ltd.

Sunday, February 23, 2025
Seventh Sunday in Ordinary Time

JOINT-PARISH LENTEN MISSION 2025

FOR INFANT JESUS AND ST. GERARD'S

*REDEMPTION THROUGH GRACE:
A LENTEN REFLECTION ON MERCY*



Fr. Matthew Browne, S.T.L., is a native of Long Island, having grown up in Valley Stream. After graduating from Kellenberg High School and St. John's University, Fr. Browne attended Catholic University of America for seminary studies, earning an advanced degree in Theology. He was ordained in 2019 and currently serves as the Director of Evangelization and Catechesis as well as the Bishop's Delegate to the Education Department while living at the cathedral parish.

APRIL 1ST AND 2ND
AT ST. GERARD MAJELLA CHURCH
(EASY PARKING AND NO STEPS!)

7:15PM BOTH NIGHTS

300 TERRYVILLE ROAD, PORT JEFF. STA.

BE REFRESHED. BE RENEWED. DRAW CLOSER TO GOD.



St. Gerard Majella Parish

Ash Wednesday 2025 Schedule

Masses

9AM

7PM

Services

12PM

5:15PM

March 5th



Parish Outreach Ministry

“Be diligent in serving the poor. Love the poor, honor them as you would Christ himself.”

—St. Louise de Marillac

Food Pantry Needs

- Granola Bars
- Shelf Stable Milk
- Canned Chicken
- Jelly
- Soup
- Canned Tuna
- Pasta
- Pasta Sauce
- Canned Fruit
- Beef Stew
- Shampoo/Conditioner
- Feminine Products
- Razors
- Shaving Cream
- Soap
- Laundry Soap
- Toothpaste/
Toothbrushes



As often as you did it for one of my least brothers, you did it for me.

Soup Kitchen Needs

- College Inn Beef and Chicken Broth
- Large bags of Pasta
- Olive Oil
- Baked Beans
- 4C Bread Crumbs
- Dried Split Peas
- Dried Lentils

Helpful Phone Numbers:

Alcoholics Anonymous 24-Hour Hotline: 631-669-1124
 Al-Anon Suffolk County: 631-669-2827
 American Red Cross - LI: 516-747-3500
 Birthright (Pregnancy Support): 631-821-9727 or 1-800-550-4900
 Brighter Tomorrow (Domestic Violence): 631-395-1800
 Catholic Charities (Food Stamp Info): 631-789-9546
 Child Advocacy Center (CAC) (Child Abuse): 631-439-0480
 Fidelis Insurance (Family Health Plus): 1-888-343-3547
 Gamblers Anonymous Hotline: 1-855-222-5542
 Good Shepherd Hospice: 631-376-3758
 Hope House Ministries: 631-473-6030
 L.I. Women’s Coalition (Domestic Violence): 631-666-8833
 Narcotics Anonymous: 631-689-6262
 National Suicide Prevention Hotline: 1-800-SUICIDE
 Response Crisis Center: 631-751-7500 (Suicide Hotline)
 The Retreat (Domestic Violence Hotline): 631-329-2200
 Conexión Linea de Crisis (M-F: 5-10 PM) 631-751-7423V
 Victims Information Bureau (Advocacy, Counseling): 631-360-3606
 Women’s Services (Town of Brookhaven): 631-698-2074

Al-Anon Meetings

At Al-Anon Family Group meetings, the friends and family members of problem drinkers share their experiences and learn how to apply the principles of the Al-Anon program to your individual situations. Our parish offers meetings every Tuesday from 10am to 11:30am.

Welcome Friends Free Curbside Meal Program

Monday: 5:00 – 6:00 PM

Christ Episcopal Church
127 Barnum Avenue, Port Jeff Village

Tuesday: 1:00 – 1:30 PM

St. Paul’s Lutheran Church
390 Patchogue Rd. (Rt. 112), Port Jeff Station

Wednesday: 5:00 – 6:00 PM

First Presbyterian Church
Corner of Main St. and South St., Port Jeff Village

Thursday: 4:00 – 5:30 PM

Doors Open at 4pm Sit Down Only between 4:30pm and 5:30pm

St. Gerard Majella Church

Friday: 3:30 – 5:00 PM

First Presbyterian Church
Corner of Main St. and South St., Port Jeff Village



Religious Education



2025 Class Masses

Sunday, March 9	10:00	Level 6 – Fellowship Sun. Breakfast
	12:00	Level 2 & Sacrament Prep Class
Sunday, March 16	10:00	Level 3
	12:00	Level 8
Saturday, March 29	5:00	Level 4
Sunday, April 6	12:00	Level 7
	2:00–7:00	Level 8 Confirmation Retreat & Mass
Sunday, April 27	10:00	Level 1 Followed by Parish
		Easter Egg Hunt
Sunday, May 11	10:00	May Crowning after Mass & Fellowship Sunday Breakfast

Background on this Sunday's Gospel Reading

Today's gospel reading is a continuation of the teaching that began in last Sunday's gospel. We continue to hear Jesus' Sermon on the Plain. Recall that in Luke's Gospel, this teaching is addressed to Jesus' disciples.

This is in contrast to the parallel found in Matthew's Gospel, the Sermon on the Mount, in which Jesus' words are addressed to both the disciples and to the crowds. These words from Jesus' teaching are familiar to us. They constitute the crux and the challenge of what it means to be a disciple: Love your enemies, turn the other cheek, give to those who ask, do unto others, lend without expecting repayment, judge not lest you be judged. There are several similarities between Luke's and Matthew's report of Jesus' great teaching. Both begin with the Beatitudes. Matthew includes nearly all the content that Luke does; the Sermon on the Mount in Matthew's Gospel is longer than Luke's Sermon on the Plain. There are, however, differences in language and nuance. For example, Matthew presents this portion of the teaching as a contrast between Jesus' teaching and the teachings of the law and the prophets. This is in keeping with Matthew's concern to address his predominantly Jewish audience. It is likely that Luke omits this contrast because it was unnecessary for the Gentile believers for whom Luke is writing. Another point of contrast between Matthew and Luke's presentation is the terminology. In Luke, Jesus contrasts the behavior of his followers with the behavior of "sinners." In Matthew, Jesus contrasts the behavior desired with the behavior of tax collectors and Gentiles. Matthew concludes the teaching about love of enemies with the admonition to be perfect as God is perfect; Luke concludes by emphasizing God's mercy.

In both Gospels, Jesus' words challenge those who would follow him to be more like God. God loves us beyond our expectations, beyond anything we can possibly imagine. In response to God's love, we are to love as God loves, beyond expectations and with a depth beyond imagining.

(Loyola Press)

Mass Intentions and Presider Schedule for the Week of February 24 – March 2

Monday, February 24

9:00am Blanche McCabe

Tuesday, February 25

9:00am Salvatore Calderone

Wednesday, February 26

9:00am Sandy Barrios

Thursday, February 27

9:00am The Intentions of Vincent & Marilyn Giarratano & Family

Friday, February 28

9:00am The Intentions of Fr. Frank Grieco

Saturday, March 1 (Blessed Virgin Mary)

5:00pm Jimmy Bridges, Nicola Cottone, Frank Hickey, Antonio Puccio, John O'Dowd

Sunday, March 2

8:00am Francis Handley

10:00am The Intentions of John Michael Maggiore

12:00pm Santino Ricottone



Fr. Greg

Fr. Vitus

Fr. Sijomon

Fr. Greg

Stewardship Report

Last Week's Collection - \$7,214.00

Weekly Memorials

***Our Sanctuary Candle has been lovingly donated
in memory of:***

Baby Zane



Prayers for the Sick

All the sick and residents of Atria, St. Joseph's Village Woodhaven Adult Home & Nursing Home & Jefferson's Ferry, Luke John Carusillo, Erin Whitehead, LouEllen Klints, Arline Guma, Charles Ricottone, Ted Claesen, Connie & Frank Biscardi, Ronnie Pryor, Vinnie Surwilo, Barbara Klein-Croner, Jack Grob, Robert Mutschler, Joan Francavilla, Barbara & Pat Consorte, Susan Patton, Nancy Mulvihill, Paul Csorba, Antonio Loiacone, Mario Cappellieri, Vincent Ricottone, Dale Beck, Marie Bilbao, Patricia Murray, Ericka Medrano, Leonardo Alfuentes, Donald Derham, Joanne Dorvil, Gregory Litterello, Kristine McDonald, Jeannette, Frank Perugini, Thomas Hayes, Pina Carpitella, Brian Moore, Baby Paul Donnelly, Daniel Dinan, Anthony Paletto, Jaclyn Lin, Mary Louise Delano, Jean Maglione, Brenda Fort, Michael Maglione, Denise Tesone Shaw, Donna DiBiago, Margarita Lupisan, Jennifer Forbes, Lena & Mary DeBuono, John Schlauraff, Margaret Clark, Diane Chin, Francis Keryc.



We pray for all recently deceased, remembering Msgr. Frank Schneider, may they find eternal rest and joy.

Our Parish Mission Statement: Formed by God's word and nourished at the Eucharist, we strive to be faithful witnesses to Jesus Christ by handing on the Catholic faith to our families and community and serving those in need.

Please stop by our Prayer Corner near Reception to borrow books and CDs on many Catholic topics to deepen your faith formation and spiritual life.



Knights of Columbus

**YOU ARE BORN A MAN
YOU BECOME A KNIGHT!**

Scan with phone camera!



YOU ARE CALLED! JOIN TODAY!

Free 12 Month Membership

Visit

KofC.org/JoinUs

Use Promo Code

BlessedMcGivney

To learn more please call Peter Santoro 631-457-9973



Online Weekly Giving

"Give and gifts will be given to you; a good measure, packed together, shaken down, and overflowing, will be poured into your lap. For the measure with which you measure will in return be measured out to you." Luke 6:38 This is a promise from God that He doesn't need a large amount, but will honor our generosity and obedience. Then, He can do a miracle to multiply and pour out blessings that overflow to our lives and others.

Columbiettes

We are an organization of women from all backgrounds united by our Catholic Faith, the love of family, our country, and our commitment to helping others. If you would like to join, please contact Penny at 631-473-2900.

OCIA Christian Initiation of Adults

Are you an adult thinking of becoming part of the Catholic community and completing your sacraments? Contact Deacon Frank at deaconfrank@stgmajella.org or 631-473-2900.



Facebook.com/stgmajella/



Instagram.com/sgmparish



Facebook.com/SGMthriftshop/



Instagram.com/sgmthriftshop



[YouTube Channel-St. Gerard Majella Parish](https://YouTube.com/St.GerardMajellaParish)

SAINT GERARD MAJELLA ROMAN CATHOLIC CHURCH

We invite you to register your family at our Parish.

Are you new to our parish? Have you been participating in our parish but never registered? Do you need to update your contact information or add a family member?

Both registration or family update forms are available in our church office 631-473-2900 or on our website: www.stgmajella.org

Under "Home" menu item

Breaking Open the Word

Reflecting on next Sunday's Gospel before you come to Mass can bring so much more meaning to your experience of the Liturgy. Here's the Gospel for next Sunday. How does this Gospel touch your life?

March 2, 2025

Eighth Sunday in Ordinary Time

Lk 6:39-45

Jesus told his disciples a parable, "Can a blind person guide a blind person? Will not both fall into a pit? No disciple is superior to the teacher; but when fully trained, every disciple will be like his teacher. Why do you notice the splinter in your brother's eye, but do not perceive the wooden beam in your own? How can you say to your brother, 'Brother, let me remove that splinter in your eye,' when you do not even notice the wooden beam in your own eye? You hypocrite! Remove the wooden beam from your eye first; then you will see clearly to remove the splinter in your brother's eye.

"A good tree does not bear rotten fruit, nor does a rotten tree bear good fruit. For every tree is known by its own fruit. For people do not pick figs from thornbushes, nor do they gather grapes from brambles. A good person out of the store of goodness in his heart produces good, but an evil person out of a store of evil produces evil; for from the fullness of the heart the mouth speaks."

Reflection Questions

- When does Jesus say a disciple will be like his teacher? What is Jesus telling us in this parable?
- What does Jesus say we should do before we remove the splinter in our brother's eye?
- What does the parable about the splinter in your brother's eye teach us?
- How might we be tempted to focus on one another's shortcomings without noticing our own and how this might lead to conflict?
- We are good disciples when we model Christian love and make good, moral choices. When we see someone do something that we think is wrong, we do not have to participate. We can be a positive influence by showing a different way to act. How can you be a positive influence this coming week?

IRISH Celebration
starring **Andy Cooney**

FEATURING
IRELAND'S COMEDY DUO
MICK THOMAS **SEAN FINNERTY**

AND
THE CHILDREN'S CHOIR OF THE CATHOLIC SCHOOLS OF ROCKVILLE CENTRE

The sights and sounds of Ireland come alive with Andy Cooney and his Irish Celebration! This is a show that showcases Ireland's Music, Song, Comedy and Dance as only Andy Cooney can bring it, as he has for over 30 years!

March 2
flagstar at **WESTBURY MUSIC FAIR** Catholic Health CONVENT CENTER

featuring
The Guinness Irish Band & Emerald Fire Irish Dance

Weekly Memorials Available

Would you like to have a loved one remembered? Give thanks for one of God's many Graces? Or offer up a prayer for someone in need? Please consider a Weekly Memorial. These are Memorials that are dedicated for an entire week, running from Monday to Sunday. Memorials are listed each week in the parish bulletin. Please contact our parish office to reserve a memorial for your intention. Memorials are available for:

Bread & Wine (\$30) Sanctuary Lamp Candle (\$20)

PLEASE JOIN OUR COMMUNITY AS WE PRAY FOR OUR PRIESTS

When: Every first Monday of the Month beginning at 1:00pm

Where: St. Joseph's Prayer Center, 312 Maple Avenue, Patchogue, NY

Our prayer will include Celebration of the Holy Mass at 1:00pm followed by Adoration of the Blessed Sacrament, Recitation of 10 decades of the Holy Rosary, Prayers for our Priests and community. We will conclude with light refreshments served and fellowship in the kitchen.

Handicapped Encounter Christ

Volunteer Opportunity Available (for adults 21+)

Handicapped Encounter Christ Ministry

Handicapped Encounter Christ (HEC) is a ministry for adults with physical, mental, cognitive and/or sensory disabilities. It is based on the Cursillo movement of the Catholic Church. HEC brings together the communities of disabled and enabled adults so they can get to know our Lord, Jesus Christ. During the year we have many events, and annually there is a three-day HEC retreat held in the spring. We are always looking for participants to join this ministry - those who are disabled and those who are not - so that together we are one community learning from each other, enjoying each other's company, and establishing many beautiful friendships as we all get to know our Lord.

2025 HEC Retreat - April 24-27

PLEASE join our HEC retreat planning meetings for enabled adults who wish to volunteer and be of service on the retreat weekend.

Monday, February 10, 7 PM - St. Francis of Assisi, Greenlawn
Wednesday, March 5, 7 PM - St. Kilian, Farmingdale (Green Room)
Monday, April 7, 7 PM - St. Francis of Assisi, Greenlawn

All are welcome. Please join us!

Call Bernice (516) 582-0302 or Bob (516) 241-4122



Compete with your fellow parishioners on a Mardi Gras/Lent trivia game, play a special kind of Bingo, make crafts, eat some delicious pizza, enjoy the dessert sharing table, participate in our 50/50, and hop on the Saints going Marching in parade!

There's truly no better way to spend a Friday night than by gathering with your St. Gerard Majella family!

A vibrant purple flyer for a Mardi Gras Parish Community Party. The background is dark purple with colorful confetti and illustrations of a masquerade mask, a party horn, and balloons. At the top left is a circular icon of St. Gerard Majella. The text is centered and reads: 'ST. GERARD MAJELLA PRESENTS MARDI GRAS PARISH COMMUNITY PARTY FRIDAY, FEBRUARY 28TH 6PM-8:30PM PARISH HALL'. Below this, it says 'Pizza Dinner, Crafts, Games, Music, and Fun..', followed by admission prices: '\$10 Adult/ \$5 kids *5 years old and under free* \$25 for a Family (2 Adults and 2 or more children)'. It also includes the note 'Children must be accompanied by an adult.' and 'Suggested-Bring a dessert to share!'. At the bottom, it says 'Tickets on sale after Masses or in our Parish Office. Call Jen at 631-473-2900 for more info.'

ST. GERARD MAJELLA
PRESENTS

MARDI GRAS

PARISH COMMUNITY PARTY

FRIDAY, FEBRUARY 28TH
6PM-8:30PM
PARISH HALL

Pizza Dinner, Crafts, Games, Music, and Fun..

Admission-\$10 Adult/ \$5 kids
5 years old and under free
\$25 for a Family
(2 Adults and 2 or more children)

Children must be accompanied by an adult.
Suggested-Bring a dessert to share!

Tickets on sale after Masses or in our Parish
Office. Call Jen at 631-473-2900 for more info.

St. Gerard Majella Adult Enrichment Series

Saved Through Grace:
Sin, its Effects, and Redemption

Presented by Deacon Frank Dell'Aglio

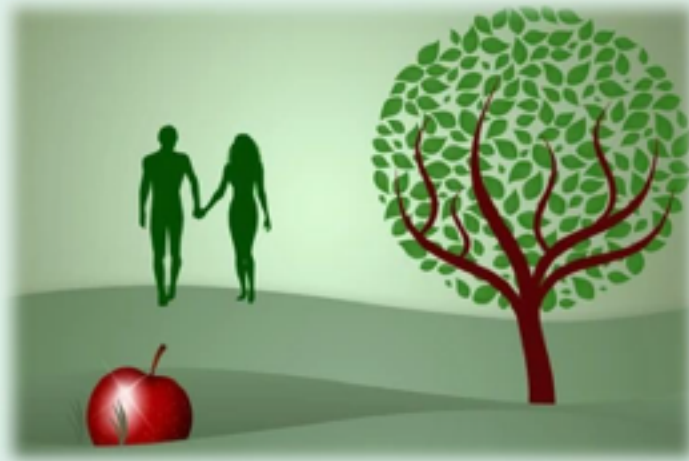


Monday Evenings 7:15pm-9:00pm in the Parish Hall *

* Classes will be video recorded

February 24th and March 3rd

Spend some time preparing for the coming season of Lent, a season of repentance for our sins.



-----*Registration Form - Complete and Return to the Parish Office*-----

Name _____ Phone # _____

Email Address _____ Please include a donation of \$10 for the course.

If you would like to purchase the United States Catholic Catechism for Adults, which will be used during the course, please include an extra \$30 in your donation.

Make checks payable to St. Gerard Majella R.C. Church. Please mail or return form to the church office in a sealed envelope marked Adult Enrichment Course.

Church of St. Gerard Majella | 300 Terryville Road | Port Jefferson Station, NY | 631-473-2900 | www.stgmajella.org

Mark Your Calendars!

Saturdays at

The Thrift Shop & Barn @ St. Gerard Majella Church!

In addition to our normal operating hours

Monday-Thursday 10-4 & Friday 10-2

We will be open 10-2 for shopping & donating:

March 1 — April 5 — May 3



**Volunteers
needed**

Come discover what 1,000-plus Facebook and Instagram followers and 40-plus volunteers already know....

Our thrift shop and barn are a great place to shop, donate and volunteer!

We are currently seeking two volunteers to join our thrift shop staff on Fridays from 10am until 2pm

Contact Denise at 631-473-2900 or email: thrift@stgmajella.org

St. Gerard Majella's Knights of Columbus

PROUDLY PRESENTS

OUR ANNUAL FAMILY AND FRIENDS RAFFLE

Get a chance to win \$300 each month plus
many other cash prizes

**GET YOUR TICKETS NOW! DON'T MISS THIS
OPPORTUNITY TO WIN BIG!!!**

**TICKETS ARE AVAILABLE AFTER EACH MASS FROM
JANUARY THROUGH FEBRUARY. DRAWINGS WILL
RUN MONTHLY FROM MARCH TO DECEMBER 2025**

**TICKETS ARE \$30 EACH OR 4 FOR \$100. QUADRUPLE
YOUR CHANCES OF WINNING BIG!!**

**ALL PROCEEDS GO TO HELPING THOSE IN NEED
WITHIN OUR COMMUNITY ALONG WITH WORTHY
CHARITIES! HELP US MAKE A DIFFERENCE!**

AS ALWAYS, WE THANK YOU FOR YOUR SUPPORT!



St. Gerard Majella Knights of Columbus Year in Review

- Each year we purchase and donate six dozen winter coats for families in need
- We provide financial assistance to support a young seminarian through the RSVP program
- We provide financial support to assist new mothers in need through the ASAP program
- We provided scholarships to graduating seniors
- We service the food pantry with a multitude of food, Back to School, Thanksgiving, Christmas, and Easter Drives (totaling close to 6,000 pounds of food)
- We started the Brookhaven Animal Shelter Drive and donated five SUV's worth of supplies and \$1,000 in gift cards (Again, thank you all for your generous donations)
- We provide support to the needs of the Parish by ushering, lecturing, being Extraordinary Ministers of Holy Communion, and helping with the Soup Kitchen on Thursdays
- We hold numerous fundraisers to help support the financial endeavors of the parish along with raising funds to donate back to the community and various organizations in need
- We cook a nutritious meal for 65 Residents of Hope House on a monthly basis
- We have raised funds to help grant children in shelters a Christmas wish in the Christmas Magic Fundraiser
- We took part in assembling 50,000 meals to support hunger

If you are a male 18 years of age or older, please consider joining our Brotherhood. We are ordinary men looking to do extraordinary things.

Click on the QR Code to join for free





Easter Outreach Ministry Drive

HELP FAMILIES HAVE A JOYFUL EASTER!

We will be collecting donations of:

**canned or frozen hams, canned potatoes,
canned green beans, apple sauce, juice,
canned yams, cans of coffee, tea bags,
frosting, candy, cream of mushroom soup,
french crispy onions, biscuit mixes, baking mixes,
plastic eggs, baking pans, plastic tablecloths,
napkins, and grocery store gift cards.**

**God bless you for your generosity! We would not be able to
help so many families if it wasn't for YOU!**

**ALL DONATIONS ARE
DUE BY SUNDAY,
APRIL 6TH**



St. Gerard Majella
ROMAN CATHOLIC CHURCH

SUNDAY GOSPEL ACTIVITIES

Z S F K J F Z U B D B V N G C P Y D T I
 R M A H D F O M Q K P N P J H R B C Z W
 O X Z P V X P B F P C M F A I A X I Z I
 K N Z Z C Y M W X N D E W Y L Y F G O E
 P Z Z M G R E W A R D R Q A D R O N P N
 Y G O P L M M P P Q K C V J R Q R T N E
 H O E M Y V V B N N N I N C E S G G B M
 U O M X C Q X M G D D F Z F N F I N Y I
 L D T E H I O Z S C U U Z H W A V O M E
 P R B L E S S M A E M L Q A M T E A P S
 S O U V U F K M F G E C X Y C H J I B V
 C T U B Q K I R O I H N R L U E U L L S
 V H K U J J N A Z V X F W W D R D O K H
 G E M A Q N D N Q E I Y H Z Q U G V P H
 B R E H E T E V H G H B R V W B E E M H
 Y S A M Y N N Y O X P B B R Q Q N E E Z
 S J S I O C J N T Q M U C N R L I M S J
 L J U X K F X E L N P K F B V I A A X T
 K A R D O M M U H P Y L V W F M M D R B
 X N E Y D H N M Q D Z F A T R I E F A K

WORD LIST

BLESS
 CHILDREN
 ENEMIES
 FATHER

FORGIVE
 GIVE
 GOOD
 JUDGE

KIND
 LOVE
 MEASURE
 MERCIFUL

OTHERS
 PRAY
 REWARD



Bryant
FUNERAL HOME

Sergio Benites Fred Bryant

411 Old Town Road
E. Setauket, NY 11733

631-473-0082

www.bryantfh.com

Service your residential and commercial real estate needs!



Charles Gambino
Licensed Real Estate Salesperson
C: 631.965.6269
216 A Main St. Port Jefferson, NY
charlesgambino@frontline-realty.com

FRONTLINE REALTY

BRIGHTVIEW SENIOR LIVING
PORT JEFFERSON
631.802.5021

BRIGHTVIEW SENIOR LIVING
SAYVILLE
631.319.0502

Independent Living | Assisted Living | Dementia Care

Now This Is Truly
INDEPENDENT
SENIOR LIVING!

Find your Brightview today.
BrightviewLongIsland.com

EMERGENCY 24 HOURS SERVICE
0% INTEREST

NEIGHBORHOOD ELECTRIC

FREE ESTIMATES
1 (631) 487-0939
1 (516) 417-8403

Lenny Mannino
Master Electrician
Licensed & Insured

VISA DISCOVER

10% OFF

Branch Funeral Homes

FUNERALS & CREMATIONS

Trust. Quality. Affordability.

Owned by the Vigilante Family - Henry Vigilante • John Vigilante • Paul Vigilante

TRUSTED CREMATION WITH CARE™ PROVIDER

Miller Place
551 Route 25A
(631) 744-9700
BranchFH.com

Smithtown
190 East Main Street
(631) 724-9500
info@BranchFH.com

Hello, neighbor!

Stephanie M Sgroi Agcy Inc
Stephanie Sgroi, Agent

Please stop by and say, "Hi!" I love being part of this community - and as a new State Farm® agent, I'm excited to get to know more of you. Whether you need insurance or financial services, I'm here to help life go right.™

CALL ME TODAY.
612 Rte 112, Pt. Jefferson Station
Bus: 631-473-6941

Hablamos Español

State Farm

Asad Butt MD.
Inamulhaque M Saboor MD.

T: 934-246-8316
F: 631-803-4458

Email: highlandvalleycare@gmail.com

Primary Care

Highland Valley Medical Care PLLC.
Address: 369 Middle Country Rd
Coram, NY 11727

HVMC PLLC.

The Rosendo make someone smile

Mike's Mechanic's Service

A Name You Can Trust Est. 1980
Your Honda Is Our Business
Domestic • Imports
All Major Credit Cards - Mon - Fri 8-5
731-9022
129 Hallock Ave., Pt. Jeff Station

MOLONEY
Family Funeral Homes, Inc.
Francis D. Moloney, Jr.

CENTRAL ISLIP
130 Carleton Ave. (631) 234-6000

BOHEMIA
1320 Lakeland Ave. • (631) 589-1500

HAUPPAUGE
840 Wheeler Rd. (Rte. 111) • (631) 361-7500

HOLBROOK
825 Main St. • (631) 981-7500

PORT JEFFERSON STATION
523 Route 112 • (631) 473-3800

moloneyfh.com

MOLONEY'S LAKE FUNERAL HOME & CREMATION CENTER
132 Ronkonkoma Avenue • (631) 588-1515

Facing a difficult pregnancy?
Say "Yes" with
FIAT
Let it be done
Pregnancy Support

from Catholic Health

Hope is here.
If you or someone you know needs assistance with an unexpected or difficult pregnancy, help is available.
Call 631-476-LOVE (5683) any day, any time (24/7).
All conversations are safe and confidential.

CITY TIRE
Since 1989
COMPLETE AUTOMOTIVE REPAIRS
TOM CLEARY

204 Hallock Ave., Rte. 25A
Port Jefferson Sta.
631-331-8330
www.citytireauto.com
Complete Automotive Services

24-hour emergency care across Long Island

Offering medical transportation services to our community. For an ambulance, call:
(516) 719-HELP 4357 | (631) 719-HELP 4357

Catholic Health

Service by **AMR**
A State Hospital Approved Station

QUALITY • FRESHNESS • VALUE
7 DAYS A WEEK

BUTTERCUP'S Dairy Store
285 Boyle Road
DAIRY STORE Port Jefferson Station
631-928-4607
Email: ButtercupDairy@aol.com
Visit Us@ www.buttercupdairy.com

Family Owned Since 1956

Michael J. GRANT
FUNERAL HOMES, INC.
Turn To A Friend

The Affordable Choice

Coram - 3640 Route 112 Phone: 631-696-0909
Brentwood - 571 Suffolk Ave. Phone: 631-273-4443

www.grantfh.com

Port Jefferson Physical Therapy

Where your recovery becomes reality

William Schauss, MSPT
Arthur Reiss, MSPT
300 Hallock Avenue
Port Jefferson Station

331.1070



O.B. Davis Funeral Homes
4839 Nesconset Hwy, Port Jefferson Station, NY 11776
631.473.0360

www.obdavisportjefferson.com

In addition to our superior customer experience & celebrating each life with highly personalized send-offs, we also offer:

- Catered Receptions • Veterans Services
- Webcasting • Exclusive Use of Facilities Available
- Preplanning and National Transferability

James M. Hammer
Parishioner & General Manager

Cindy Cavorti
Location Manager

"Honoring life's memories & serving the community like no other since 1858"

O.B. Davis Funeral Homes
4839 Nesconset Hwy, Port Jefferson Station, NY 11776
631.473.0360

www.obdavisportjefferson.com

In addition to our superior customer experience & celebrating each life with highly personalized send-offs, we also offer:

- Catered Receptions • Veterans Services
- Webcasting • Exclusive Use of Facilities Available
- Preplanning and National Transferability

James M. Hammer
Parishioner & General Manager

Cindy Cavorti
Location Manager

#195 FOR ADVERTISING: THE CHURCH BULLETIN INC., 200 DALE ST., W. BABYLON, NY 11704-1104 (631) 249-4994 • www.thechurchbulletin.com • geosk@aol.com